

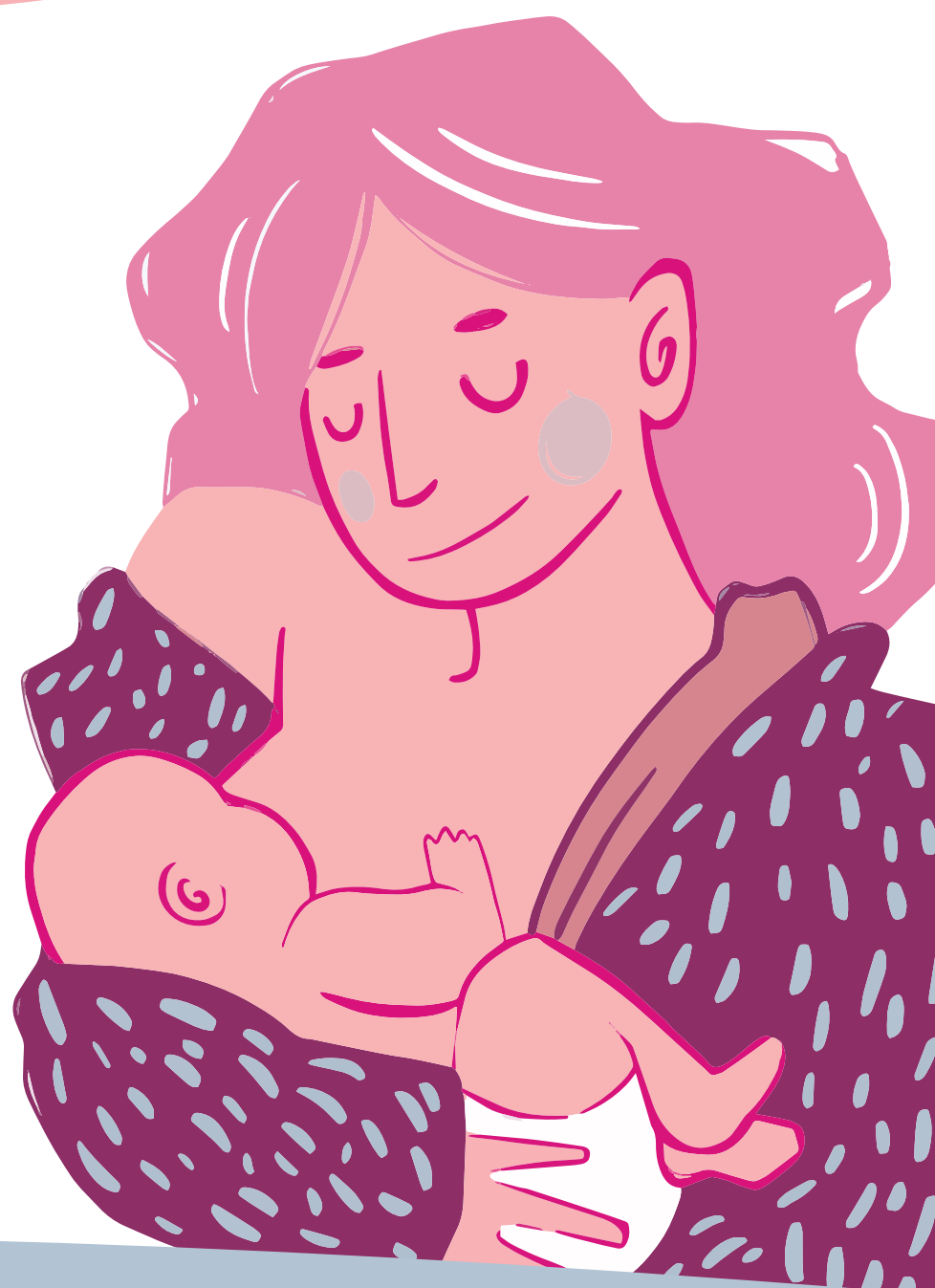


Dear mother, you are nursing and you are working?

You are entitled to:

- › **2x45 minutes** for a full-time job
- › **1x45 minutes** for part-time work

Breastfeeding breaks are calculated in proportion to the hours worked.



**TO BREASTFEED
AND WORK
IS YOUR LEGAL RIGHT!**

Further information on:



www.sante.lu